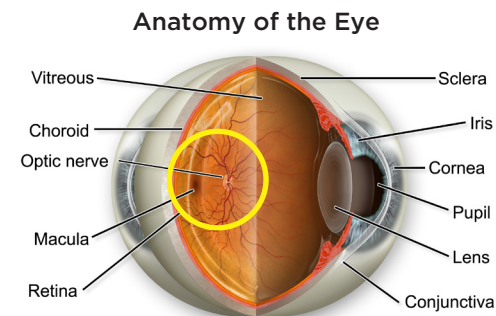

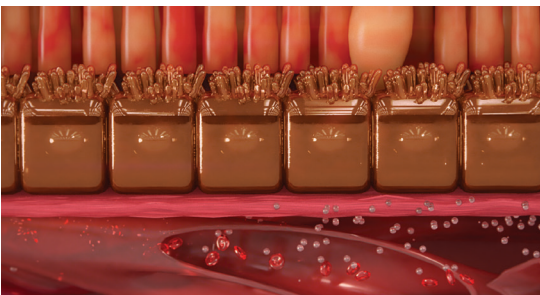

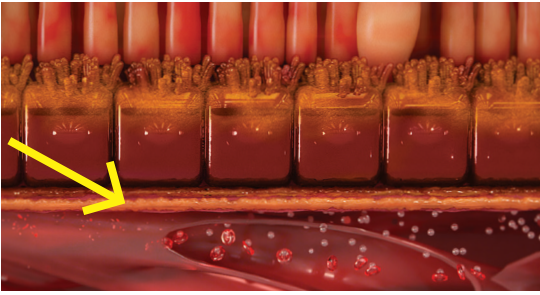
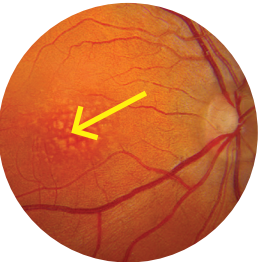
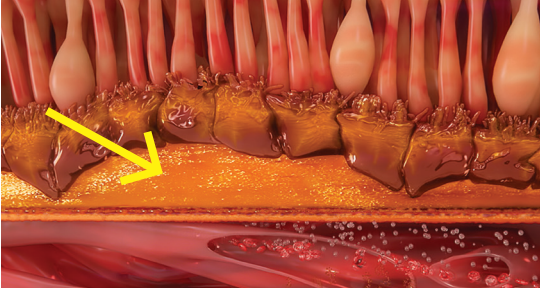


How We Find Age-related Macular Degeneration (AMD)



	Looking at the anatomy		Testing night vision
	What imaging technology shows us	What's actually happening in the macula	AdaptDx [®] test results
Consistent with no AMD	 <p><i>Healthy looking macula</i></p>		<p>Pass RI < 6.5</p>
Consistent with subclinical AMD	 <p><i>Healthy looking macula but an invisible layer of cholesterol is causing night vision problems</i></p>		<p>Fail RI ≥ 6.5</p>
Consistent with early to intermediate AMD	 <p><i>Build-up of cholesterol now shows as visible drusen and dark adaptation function is even slower</i></p>		<p>Fail RI ≥ 6.5</p>